

# LUXURYSTANDARD Magazine

April 4, 2016

[LINK](#)



## TAKE TO THE SKIES AT 1065 MIDTOWN

Deacon James April 4, 2016 Lifestyle

### LUXURY LIVING AT 1065 MIDTOWN. IN THE HEART OF ATLANTA.

1065 Midtown is proof that gone are the days of the dreaded downsize.



LIZ LAPIDUS PR  
PUBLIC RELATIONS

As the children fly the coop, “empty nesters” are also taking to the skies— in high rise condos, that is.

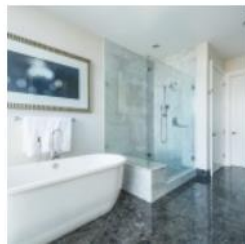
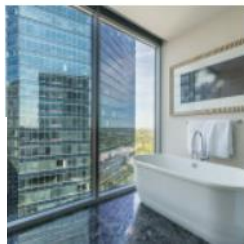
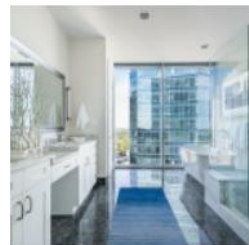
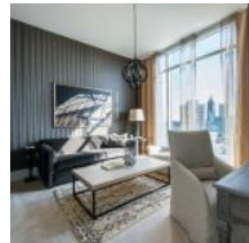
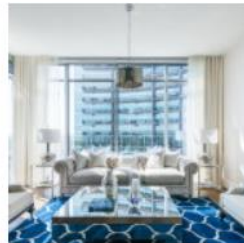
As the children fly the coop, “empty nesters” are also taking to the skies– in high rise condos, that is.

**1065 Midtown**, situated above the **Lowes Atlanta Hotel**, offers the best of Midtown with panoramic views of Atlanta and a full suite of services and amenities, including 24-hour concierge, gym and spa, fine dining and housekeeping– making downsizing not only desirable, but luxurious.



Wide-open living spaces, floor-to-ceiling glass and deluxe finishes from around the world.

Plus the ultimate luxury – true privacy in the heart of the city.



LIZ LAPIDUS PR  
PUBLIC RELATIONS

There are several different floorplans to choose from as well at 1065 Midtown.

**WHAT:** 1065 Midtown is 52 homes situated on the top 11 floors of the AAA Four Diamond-rated Loews Atlanta Hotel with full-service amenities that provide a truly unique living environment.

**WHERE:** 1065 Midtown is located along the Midtown Mile of Atlanta, Georgia above the Loews Atlanta Hotel, just a short distance from Piedmont Park, the Atlanta BeltLine and more.

**WHO:** Owned by TriBridge Residential and designed by Rule Joy Trammell + Rubio, LLC.

**WHY:** With in-town home prices continuing to rise, the decision to sell these homes as condominiums was made in order to meet the ever-growing demand for sophisticated and elegant living in this affluent neighborhood.

**FEATURES:** Floor-to-ceiling glass paneled windows, hardwood floors, private balconies and designer kitchens with estate-grade granite countertops, self-closing drawers, chef-grade vent-a-hood and 44-inch custom kitchen craft cabinetry. Homes vary in size between 1,182-square-feet and 2,819-square-feet. 1065 Midtown's prime location, architectural detail and exclusive residential amenities are unmatched for those who are seeking fine style, luxury services and impeccable design.

As with all things of luxury. A limited number of residences are available from \$990,000. Contact 1065 Midtown agents below to arrange your private tour.

#### **1065 MIDTOWN**

1065 Peachtree Street

Atlanta, GA 30309

[info@1065midtown.com](mailto:info@1065midtown.com)

[404-410-4481](tel:404-410-4481)

